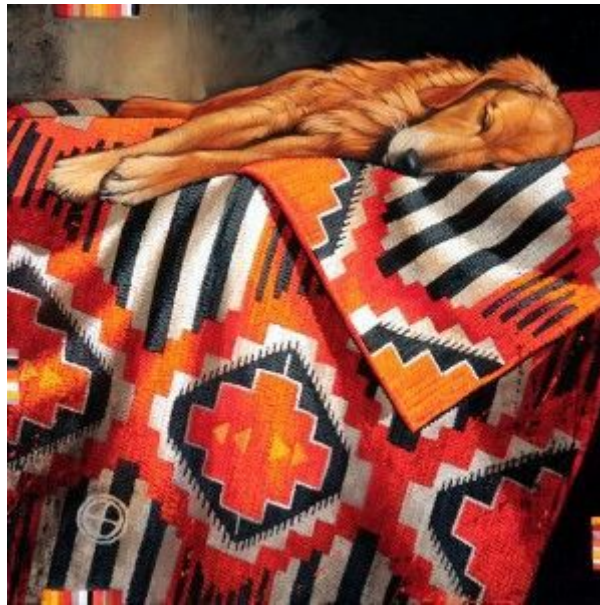


Craig Kosak - Myth and Legends

Craig Kosak has been a customer for many years and it's always fun to see his new work. His work captures the West and Southwest with what I would call a magical realism. He describes his process as " Rather than faithfully documenting the flora and fauna, I strive to capture the feeling and emotions these trips provide. Each trip consists of both a journey through the outer world, and an inner journey of self discovery. These paintings are about both worlds and how they relate." He has exhibitions opening in Sante Fe August 19th at [Giacobbe-Fritz Fine Art](#) and September 15th at the [National Museum of Wildlife Art](#). Craig has been featured in the American Art Collector magazine, Southwest Art Magazine, and the Sante Fean Magazine. In addition to Sante Fe, his work can also be seen in galleries in Kirkland, WA, Jackson, WY, and Ketchum, ID. To learn more visit his [website](#).





Dreamers



I just received this email from Susan Armington, a customer of ours. "I'm attaching a photo of my artwork "Lucid Dream with Palace" in its Metropolitan Picture frame, hanging at the Dream Art Exhibit at the conference for the International Association for the Study of Dreams in Rolduc, Kerkrade, the Netherlands. What a conference! Artists, academics, analysts, dreamers. All of us together for 5 days, June 24-28, 2011. If you're curious, I'm writing a piece that will appear in next month's "quodlibetica" online magazine (www.quodlibetica.com) about the dream art..."